

**ELS** Essential  
Letters and  
Sounds  
developed by Knowledge Schools Trust

# Essential Letters and Sounds The Phonics Screening Check



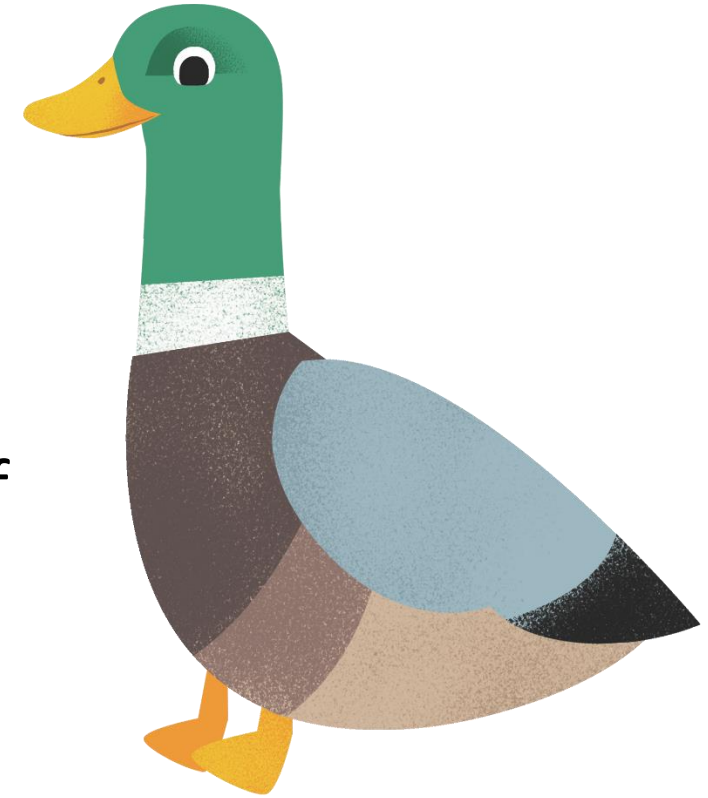
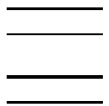
**ELS** Essential  
Letters and  
Sounds  
developed by Knowledge Schools Trust

Getting all children  
to read well, quickly



## What are we going to cover?

- What is the PSC and why was it introduced?
- What does it check?
- What are the allowances?
- How ELS supports children to achieve the outcomes of the PSC



## What is the PSC?

- Phonics Screening Check is a statutory assessment conducted in the Summer Term of Year One.
- Introduced in 2011, to ensure that all children have learnt phonic decoding to an age-appropriate standard.
- The aim of the PSC was to encourage all schools to pursue a rigorous phonics programme for all children from the start of primary school.

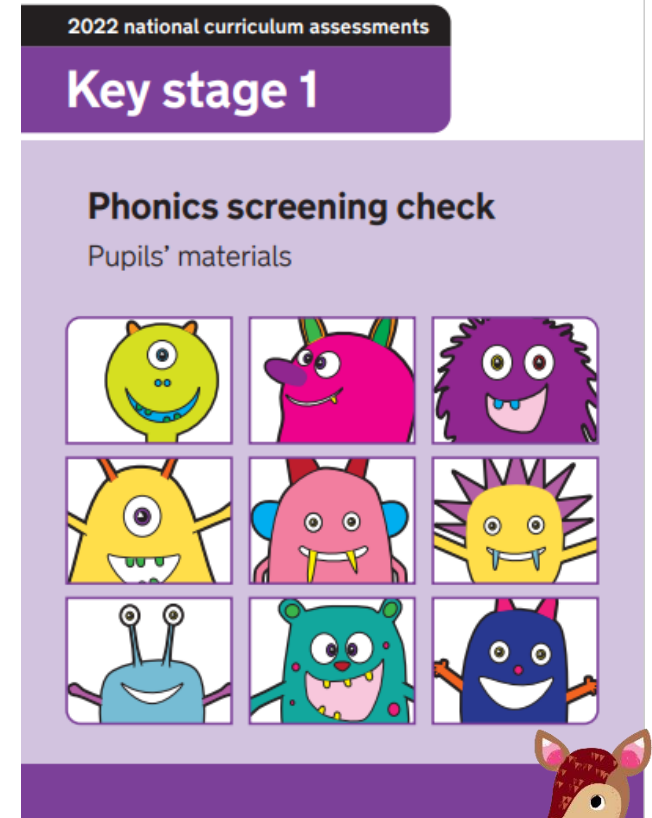


## What does the PSC assess?

**40 words**

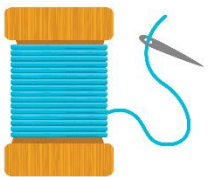
**Section 1:** 8 real words and 12 pseudo words

**Section 2:** 12 real words and 8 pseudo words



# Phonics Screening Check

- Assesses phonics skills and knowledge learned through Reception and Year 1 – decoding and blending skills
- Your child will read up to four words per page for their teacher
- Usually complete the check in one sitting of about 5–10 minutes.
- Real and pseudo words – check blending
- Pass or fail – previous pass rate 32/40



## Key Information

- Pseudo words, are not real words. In the assessment, these words will have an alien image next to them.
- All accents will be taken into account when the child is answering.
- Any pronunciation difficulties will be taken into account.
- Your child's final answer is what we will take.



## PSC as Assessment

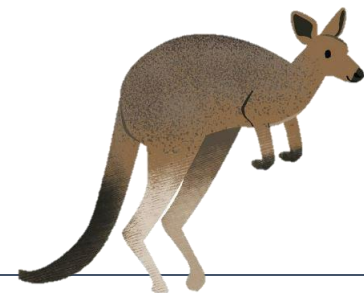
- Report if child has passed/failed PSC in July report
- Used to inform end of year assessment for reading – working At Age Related Expectation or below
- Used to identify what support is needed for your child – phonics interventions needed in school
- Inform teaching in Year 2 and beyond
- **Repeat in Year 2 if not passed in Year 1**





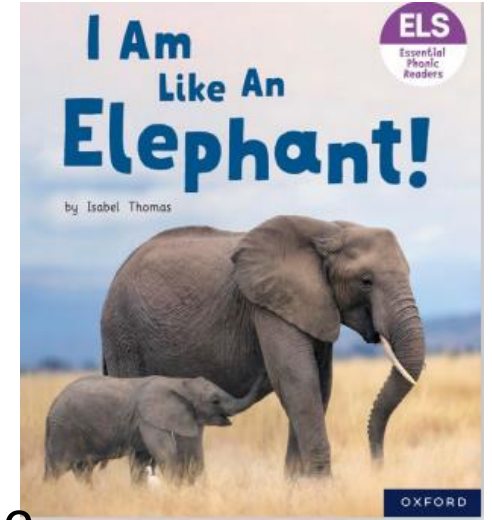
## How does ELS support the PSC

- We focus on teaching children to read and to have access to books and text.
- ELS teaches children vocabulary and ensures that children have meaning and context for language.
- Teaches accuracy, fluency and confidence.
- Accurate assessment ensures that we know where every child is.



## How can you help at home?

- Listen to your child read 3 times a week minimum
- Watch the online pronunciation videos
- If your child is finding it hard to read a word, help them break words down into individual sounds and then blend them together to read the word.
- Use practice screening resources sent home



# Pure sound pronunciation



# Questions

